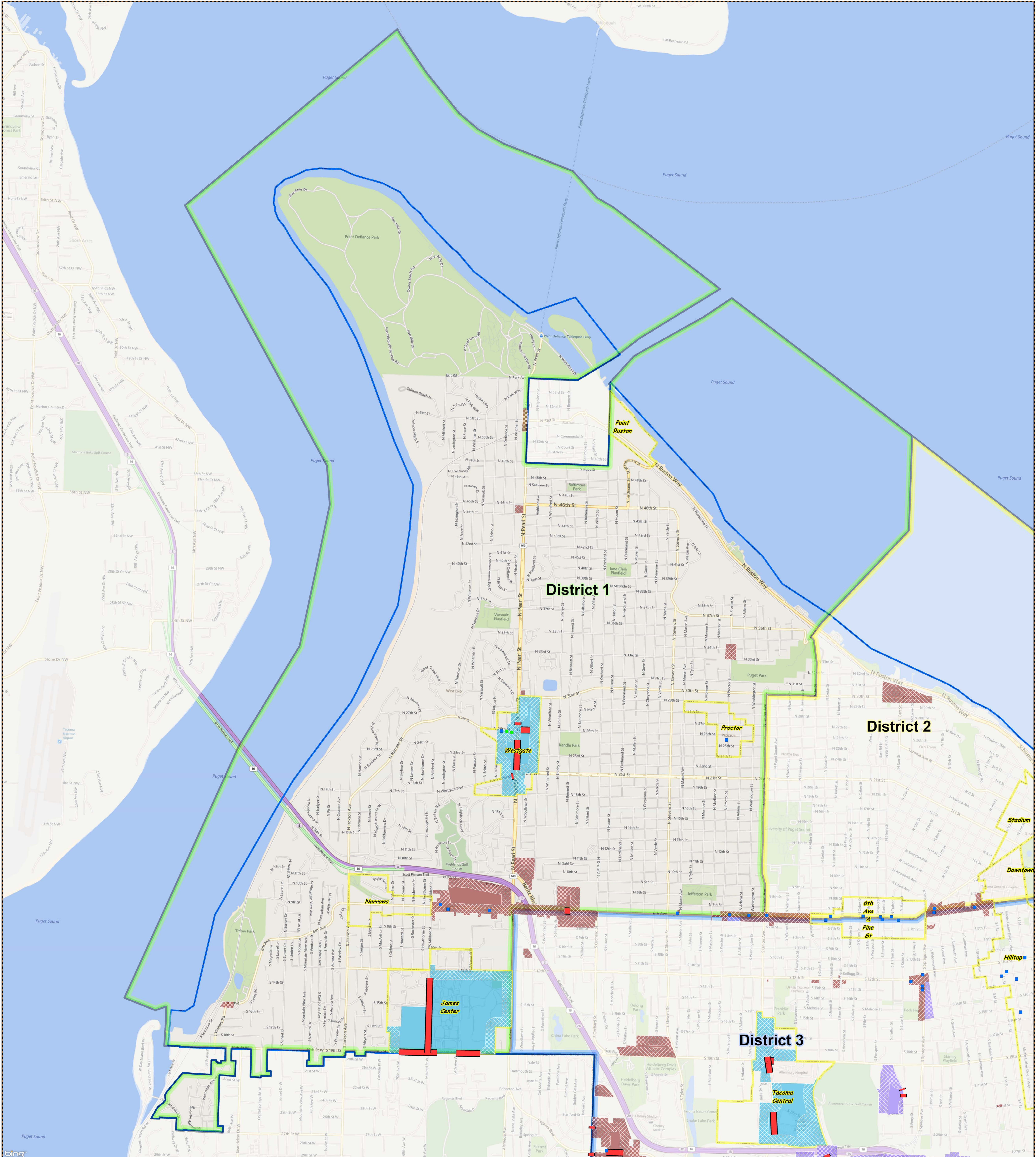


Billboards - 300' Option

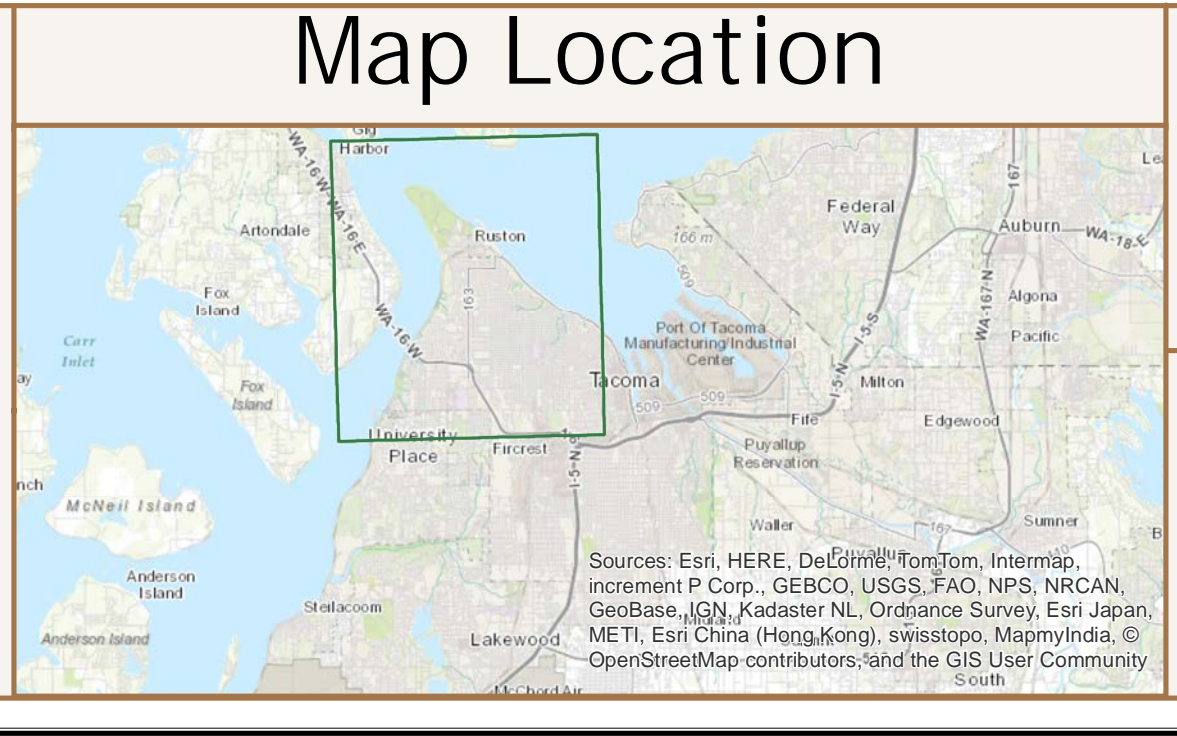
City of Tacoma By Councilmanic District

District: 1



- Non-conforming Billboards (221)
- Conforming Billboards (90)
- Arterials Available (300' - 26.7 total miles)
- Downtown (DCC; DMU; WR - 8 billboards, 2.2 miles available)
- Mixed Use (CCX; CIX; UCX - 16 billboards, 5.8 miles available)
- Commercial (C2 - 4 billboards, 1.2 miles available)
- Industrial (M1; M2; PMI - 62 billboards, 17.5 miles available)
- Buffer Area within Inclusion Zone (300')
- Mixed Use Centers

This map represents a preliminary analysis of the proposed buffering standards. It is not 100% accurate and is subject to further review and refinement. Verification of the availability of a particular site may necessitate more detailed analysis to ensure the accurate location of buffered zones in the particular area.



City of Tacoma
Community & Economic Development Department
GIS Analysis & Data Services

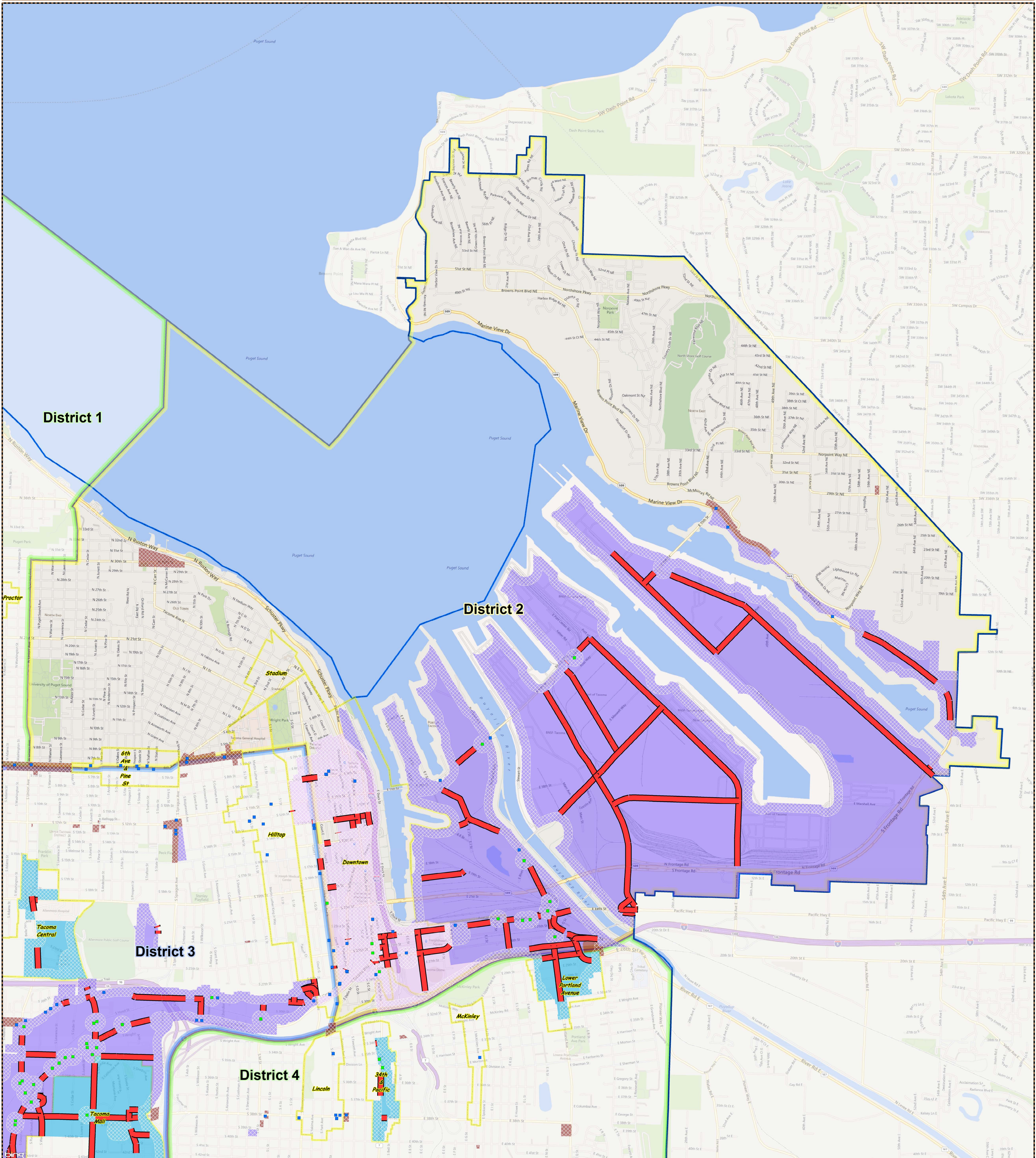
1400 0 1400 2800 4200
Feet

This drawing is neither a legally recorded map nor a survey and is not intended to be used as one. It is to be used for reference purposes only.

Billboards - 300' Option

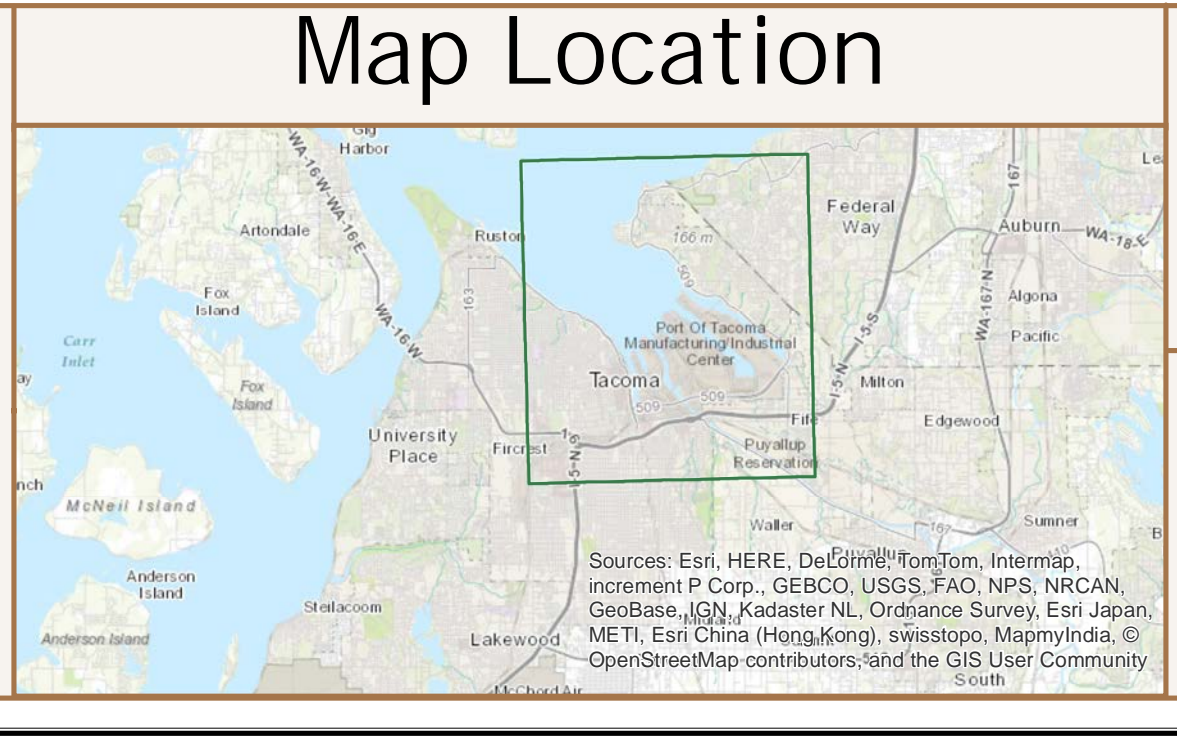
City of Tacoma By Councilmanic District

District: 2



- Non-conforming Billboards (221)
- Conforming Billboards (90)
- Arterials Available (300' - 26.7 total miles)
- Downtown (DCC; DMU; WR - 8 billboards, 2.2 miles available)
- Mixed Use (CCX; CIX; UCX - 16 billboards, 5.8 miles available)
- Commercial (C-2 - 4 billboards, 1.2 miles available)
- Industrial (M1; M2; PMI - 62 billboards, 17.5 miles available)
- Buffer Area within Inclusion Zone (300')
- Mixed Use Centers

This map represents a preliminary analysis of the proposed buffering standards. It is not 100% accurate and is subject to further review and refinement. Verification of the availability of a particular site may necessitate more detailed analysis to ensure the accurate location of buffered uses in the particular area.



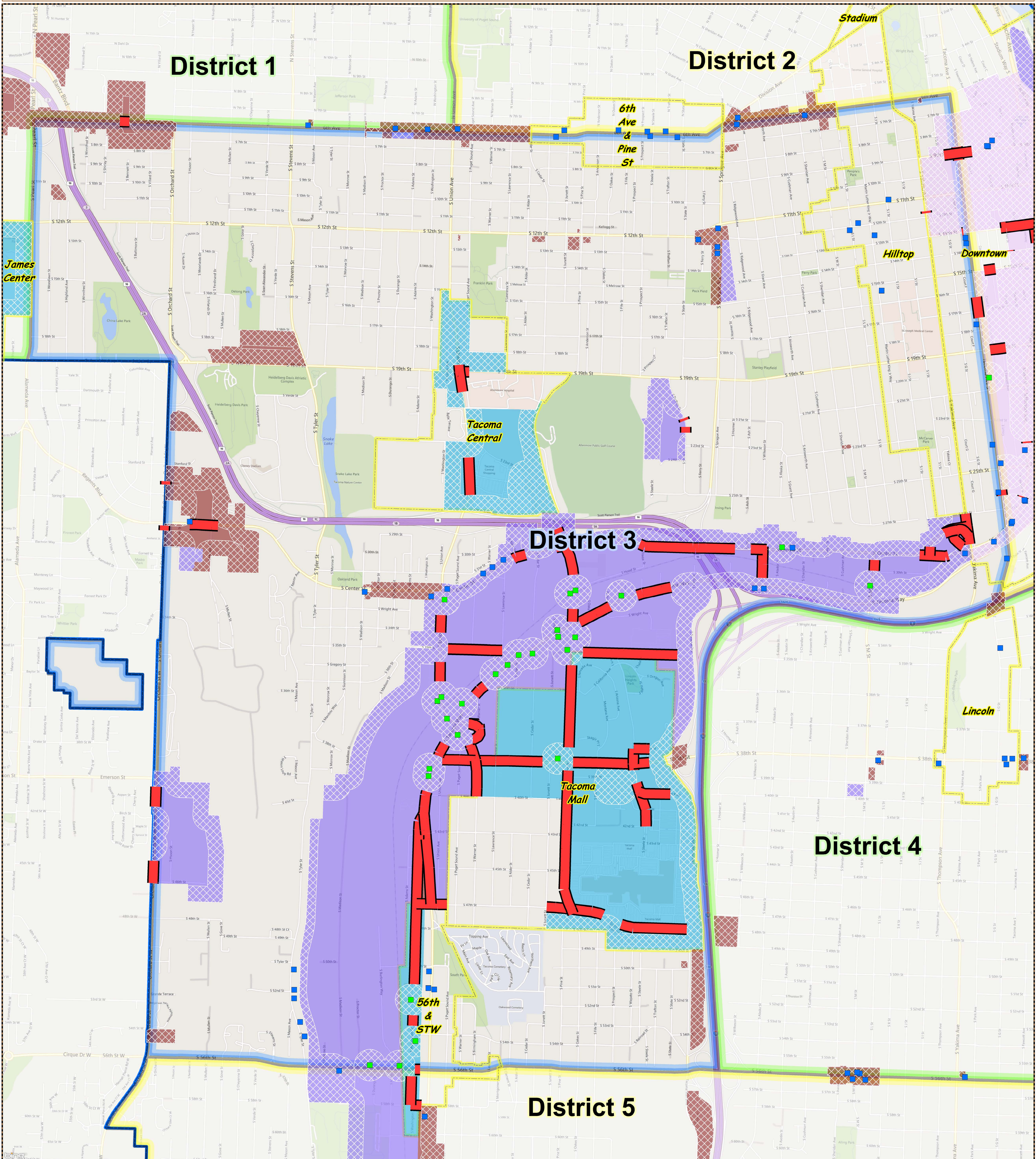
City of Tacoma
Community & Economic Development Department
GIS Analysis & Data Services

This drawing is neither a legally recorded map nor a survey and is not intended to be used as one. It is to be used for reference purposes only.

Billboards - 300' Option

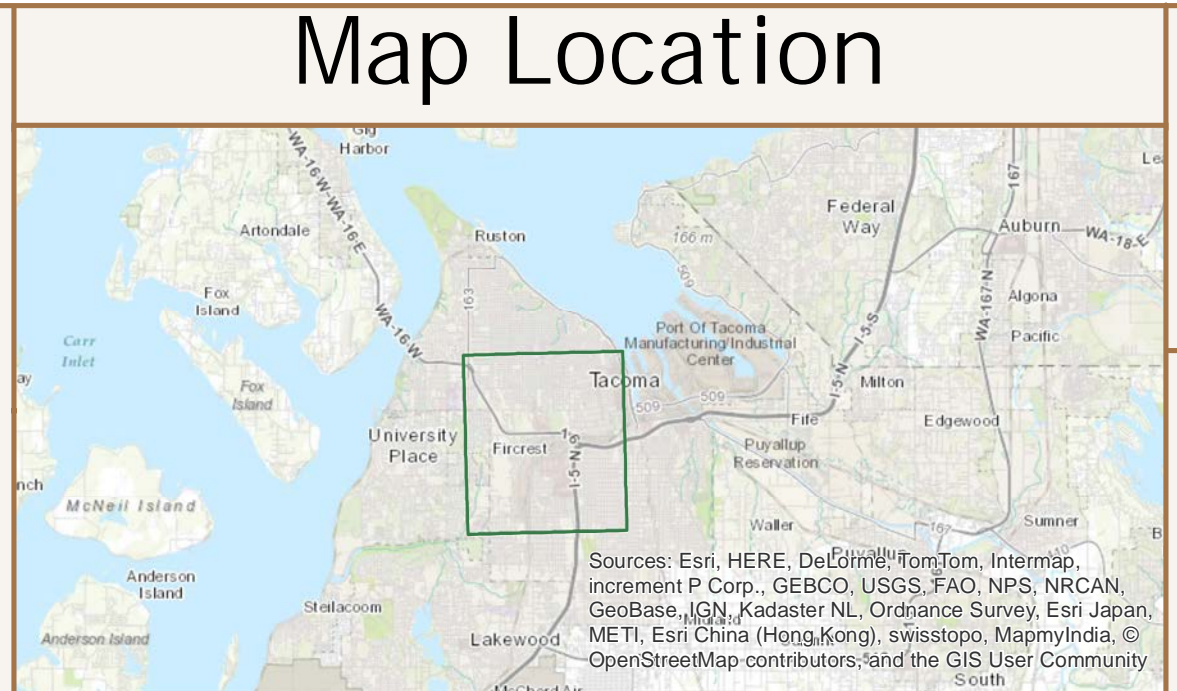
City of Tacoma By Councilmanic District

District: 3



- Non-conforming Billboards (221)
- Conforming Billboards (90)
- Arterials Available (300' - 26.7 total miles)
- Downtown (DCC; DMU; WR - 8 billboards, 2.2 miles available)
- Mixed Use (CCX; CIX; UCX - 16 billboards, 5.8 miles available)
- Commercial (C-2 - 4 billboards, 1.2 miles available)
- Industrial (M1; M2; PMI - 62 billboards, 17.5 miles available)
- Buffer Area within Inclusion Zone (300')
- Mixed Use Centers

This map represents a preliminary analysis of the proposed buffering standards. It is not 100% accurate and is subject to further review and refinement. Verification of the availability of a particular site may necessitate more detailed analysis to ensure the accurate location of buffered zones in the particular area.



City of Tacoma
Community & Economic Development Department
GIS Analysis & Data Services

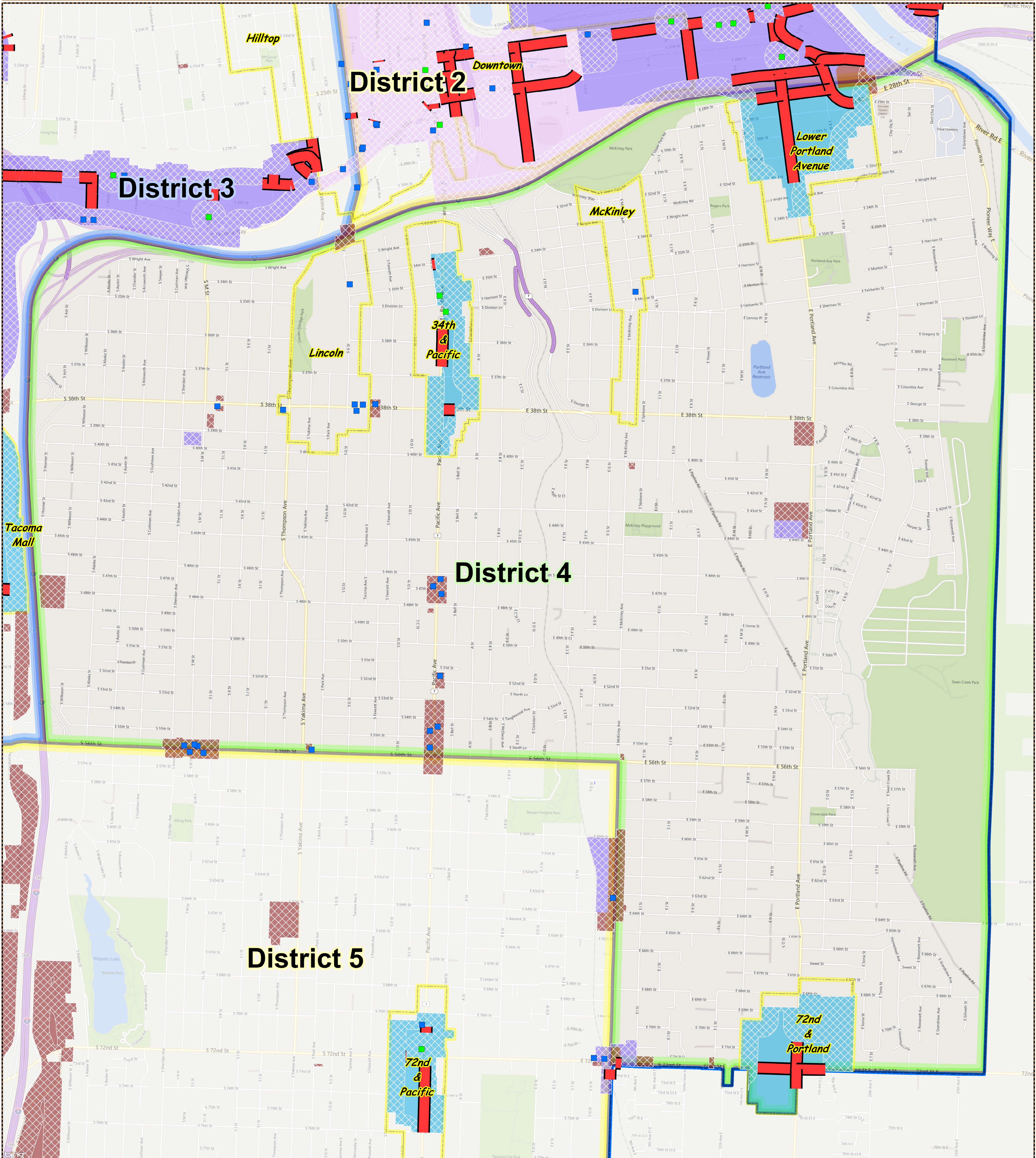
880 0 880 1760 2640
Feet

This drawing is neither a legally recorded map nor a survey and is not intended to be used as one. It is to be used for reference purposes only.

Billboards - 300' Option

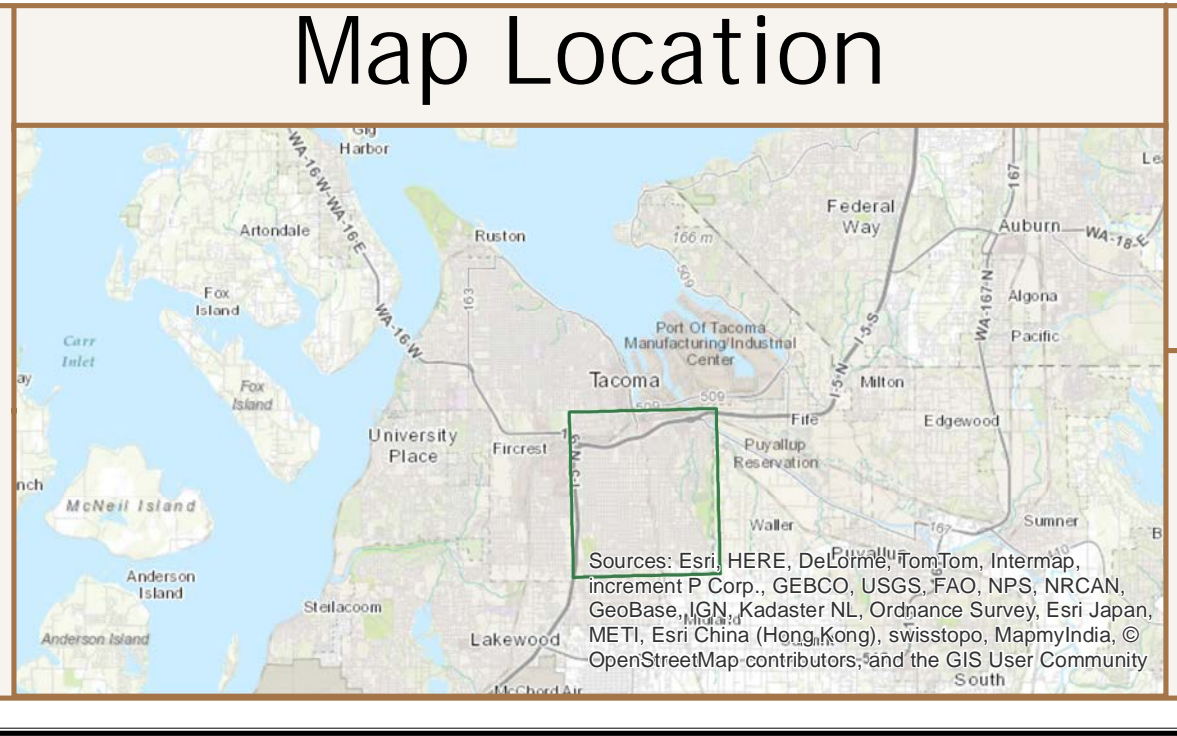
City of Tacoma By Councilmanic District

District: 4



- Non-conforming Billboards (221)
- Conforming Billboards (90)
- Arterials Available (300' - 26.7 total miles)
- Downtown (DCC; DMU; WR - 8 billboards, 2.2 miles available)
- Mixed Use (CCX; CIX; UCX - 16 billboards, 5.8 miles available)
- Commercial (C2 - 4 billboards, 1.2 miles available)
- Industrial (M1; M2; PMI - 62 billboards, 17.5 miles available)
- Buffer Area within Inclusion Zone (300')
- Mixed Use Centers

This map represents a preliminary analysis of the proposed buffering standards. It is not 100% accurate and is subject to further review and refinement. Verification of the availability of a particular site may necessitate more detailed analysis to ensure the accurate location of buffered uses in the particular area.



City of Tacoma
Community & Economic Development Department
GIS Analysis & Data Services

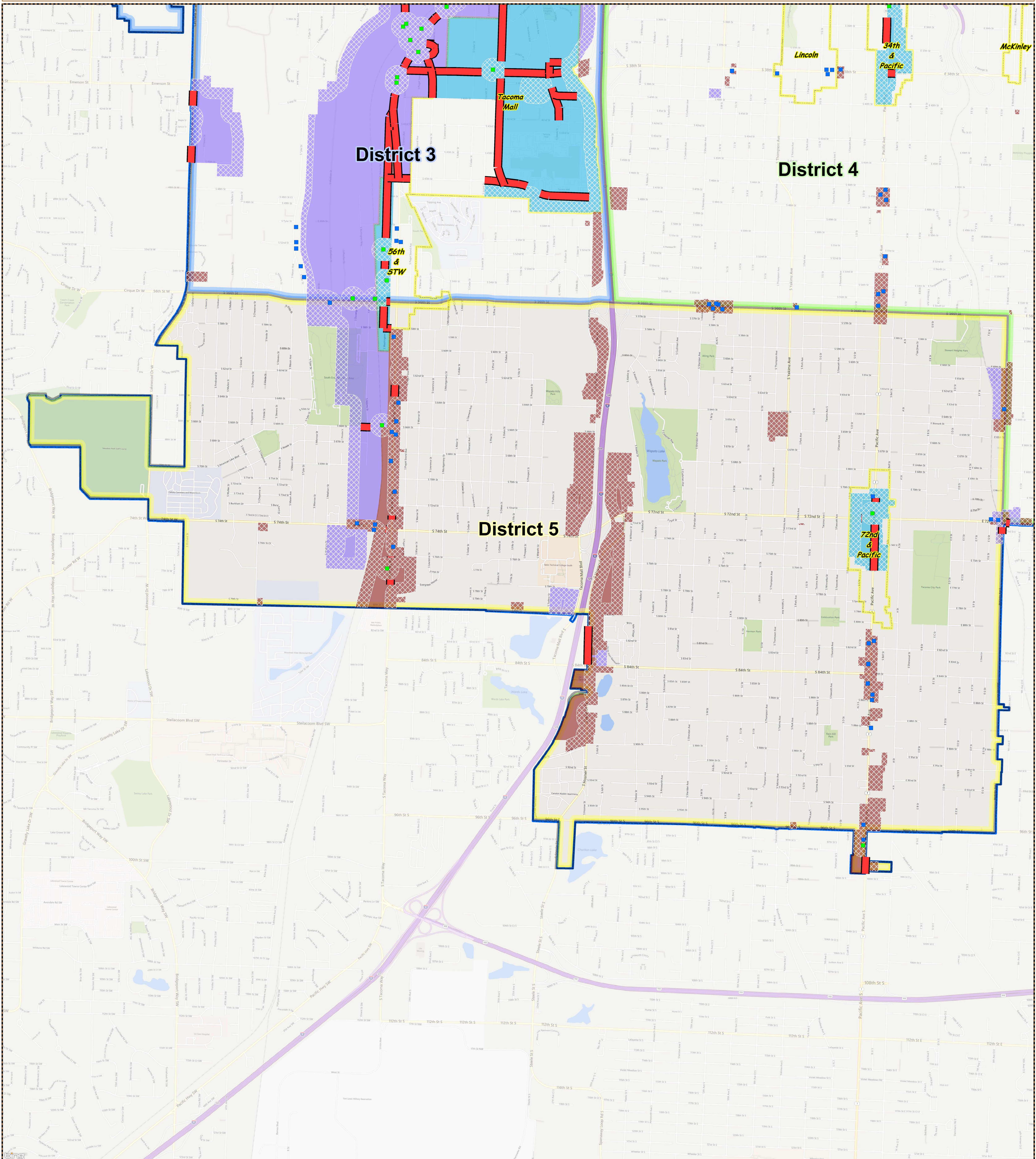
820 0 820 1640 2460
Feet

This drawing is neither a legally recorded map nor a survey and is not intended to be used as one. It is to be used for reference purposes only.

Billboards - 300' Option

City of Tacoma By Councilmanic District

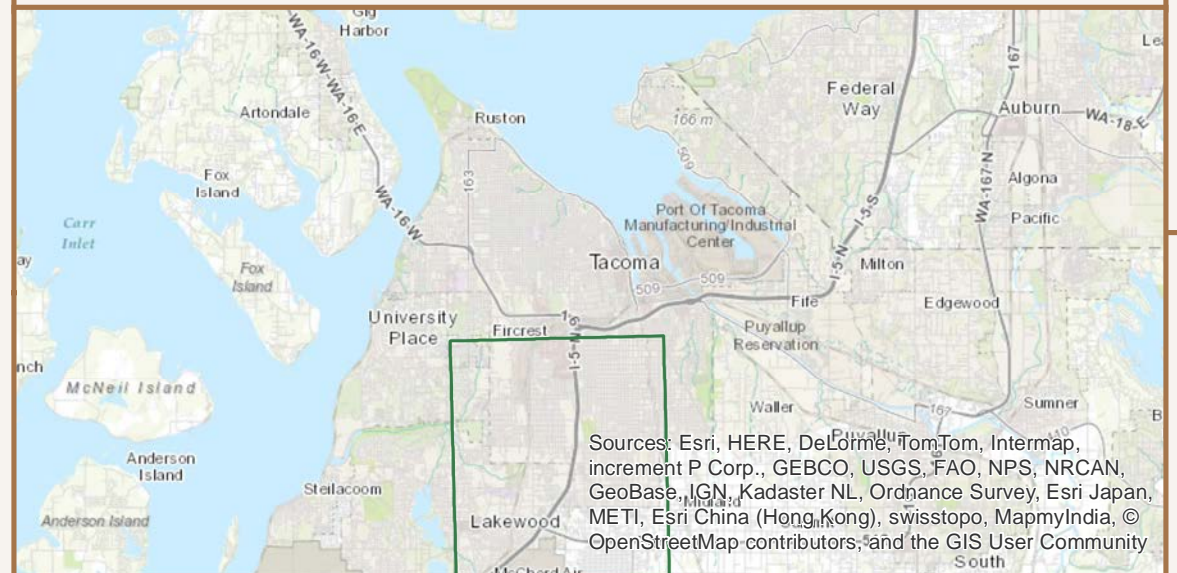
District: 5



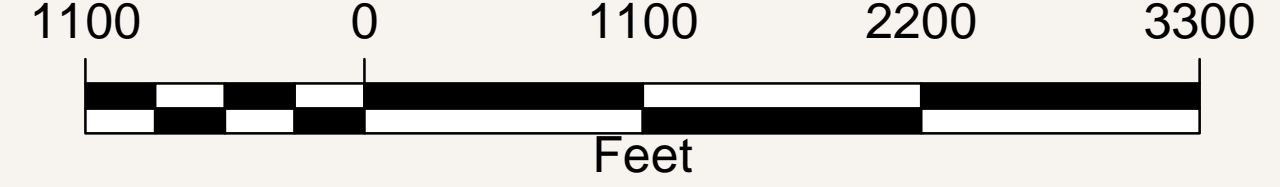
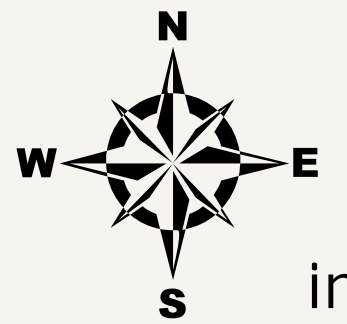
- Non-conforming Billboards (221)
- Conforming Billboards (90)
- Arterials Available (300' - 26.7 total miles)
- Downtown (DCC; DMU; WR - 8 billboards, 2.2 miles available)
- Mixed Use (CCX; CIX; UCX - 16 billboards, 5.8 miles available)
- Commercial (C2 - 4 billboards, 1.2 miles available)
- Industrial (M1; M2; PMI - 62 billboards, 17.5 miles available)
- Buffer Area within Inclusion Zone (300')
- Mixed Use Centers

This map represents a preliminary analysis of the proposed buffering standards. It is not 100% accurate and is subject to further review and refinement. Verification of the availability of a particular site may necessitate more detailed analysis to ensure the accurate location of buffered uses in the particular area.

Map Location



City of Tacoma
Community & Economic Development Department
GIS Analysis & Data Services



This drawing is neither a legally recorded map nor a survey and is not intended to be used as one. It is to be used for reference purposes only.

